

NGALAMBAY



Acknowledgement of Country

We pay our respects to the Dharawal people who are the Traditional Custodians of the Land, whose deepening connection to culture and customs has cared for this Country for over 60,000 years. We acknowledge Elders past, present and emerging for their immense spiritual connection to place, which was never ceded.

Dharawal Land has always been recognised as a meeting place for people from other lands, and in this spirit, we respectfully continue this tradition by bringing together our communities through arts and culture.

Always was and always will be Aboriginal Land.



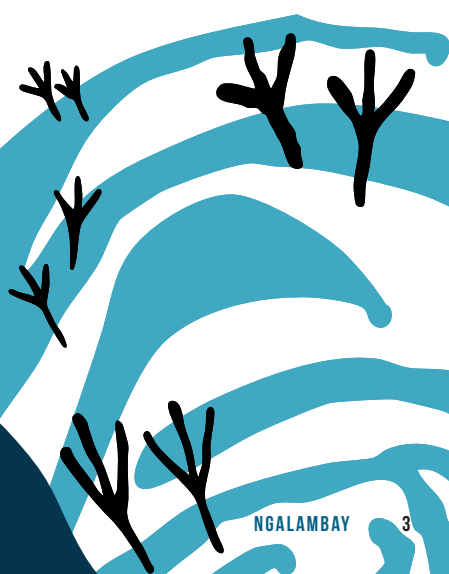
CONTENTS

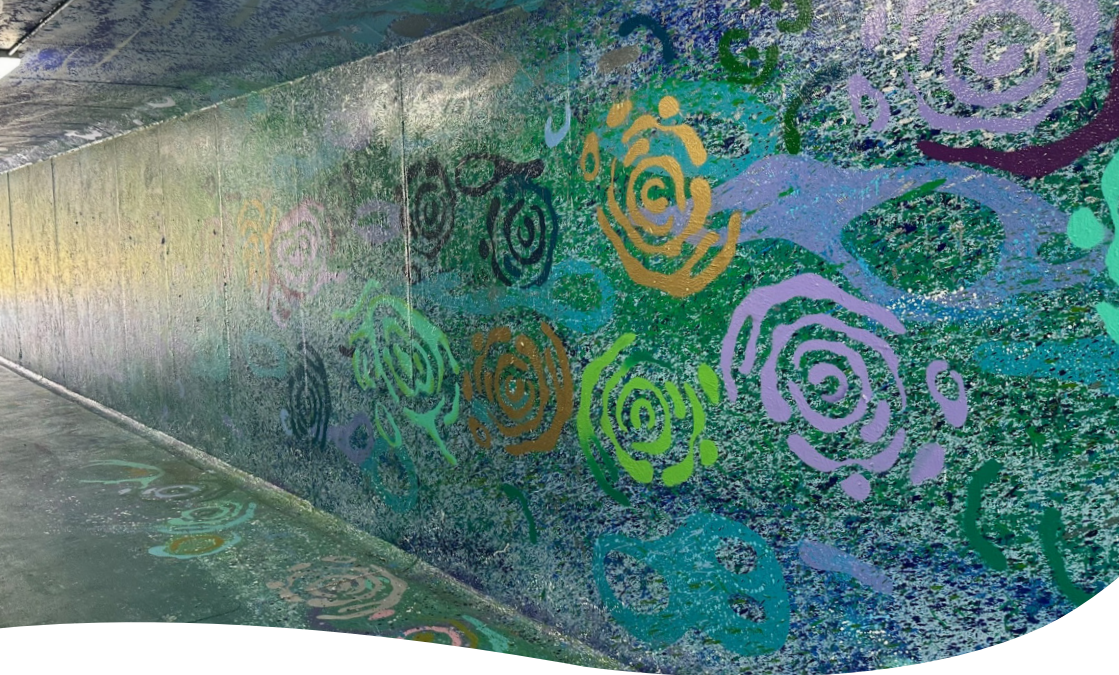
About the Artwork	4
About the Artists	7
Connection to Country	8
Connection to Ceremony & Community	9
Project Team	11



LOCATION

Bradbury Underpass
(corner Moore-Oxley and Camden Road)





ABOUT THE ARTWORK

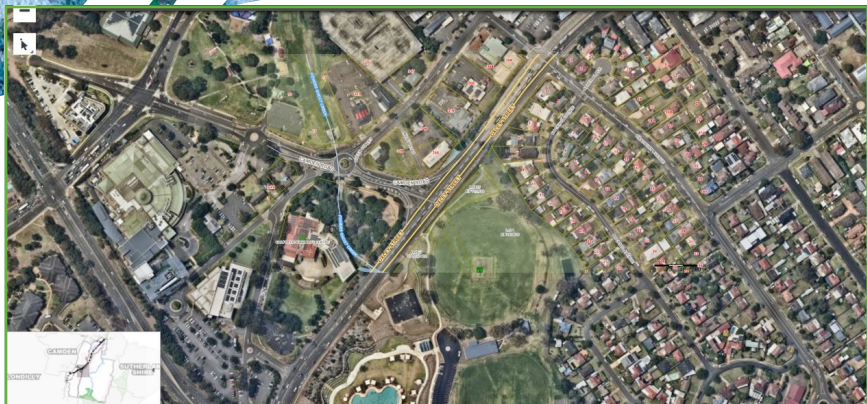
Ngalambay is a site-specific immersive portal through time and space linking Water, Mother and Country. The artwork honours Campbelltown's Minerva Billabong, a sacred Dharawal women's business and birthing site and Auntie Kay Bussell who shared Traditional Water Cleansing Ceremony with the Campbelltown Community.

The journey begins by tracing the lyrebird footsteps as they lead you to a water cleansing. The opening of the underpass references the Minerva pools rock formations. The gum leaves perform a water cleansing ceremony performed for healing, transformation and cleansing. The silver paint drops shower over the wall shimmering and glistening in the sunshine as it does at the pools and in the birthing ceremony,

the first site of the newborn babies. The shimmers reference shooting stars, shadows and purity.

The next part of the journey invites the viewer to reflect and transform, breathe and connect. You are taken on an underwater journey with spectres of light and shadows. The underwater journey pays respect to the women who carry their babies for nine months.

The background splatter effect is a contemporary 'cave painting' effect, one of the first artforms in the world. It also pays homage to our Ancestors and Aboriginal culture, the world's oldest continuous living culture.

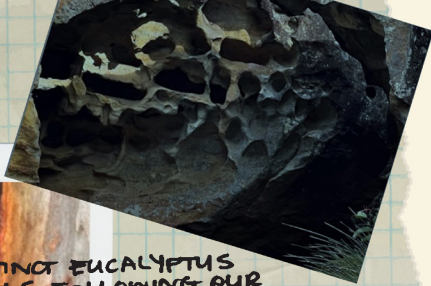


The painted motifs on the wall reference gum tree bark patterns, canoes, fish, eels, water ripples, figures of women at the pools as well as the men standing watch for protection around the pools tracks and landscapes.

In Aboriginal culture, the journey of the Spirit goes to the Sky and forms the constellations. The artwork's painted surface is complimented with rippling lights that create a sense of water and galaxies talking to the journey and transformation of life and death.

The iridescent acrylic sheets mirror this, with ripple designs used to pick up light and recreate the falling of the water drops creating magical flickers of shadow and light.

As you pass though the underwater cultural journey, we encourage reflection, introspection and regeneration focusing on cycles of life. We invite you to slow down to listen, engage and enjoy each moment.



DISTINCT EUCALYPTUS
SMELLS FOLLOWING OUR
MOVING WATER CLEANSING



NATURAL PATTERNS EVERYWHERE

Transporting through time through the sound of water running, dripping
The Scent of eucalyptus, fresh water, earth - hard to explain the smell of being inside earth.



SOUNDS OF RUNNING WATER



SO GRATEFUL FOR AUNT
KAREN'S WATER CLEANSING

ABOUT THE ARTISTS



MADDISON GIBBS

Maddison Gibbs is a proud Gunu Baakandji woman born and raised in Dubbo, NSW.

Both artist and activist, Gibbs' practice examines dual histories – focusing on stories of past and present Aboriginal societies and spirits. Gibbs is a multidisciplinary artist, working across a wide spectrum of cultural praxis, utilising many methods, ideologies and mediums.

Current thematic include intergenerational contemporary Aboriginal stories, focusing women's narratives and perspectives.

Gibbs' artworks are polarising, offering up feminine intuitive visual poetics, starkly contrast with her art activism at the barricades. The dual sensitivities of caring for a country and fighting injustice is an interesting tension explored throughout Gibbs diverse arts practice.

[@maddisongibbswing](#)



DANIELLE MATE

Danielle Mate is a proud Aboriginal woman and Sydney based artist working internationally for brands, corporations, cultural events and government agencies in the creation of contemporary art pieces and designs, largescale mural designs and public art installations. Danielle has worked with a number of Iconic Australian brands aligning herself with their reconciliation action plan and helping to elevate their connection to First Nations peoples. Danielle's community work moves further than just her art. She has been responsible for running a selection of workshops helping to educate, involve, and collaborate with Indigenous youth and issues through the medium of her art.

[@daniellemateartist](#)

CONNECTION TO COUNTRY

Campbelltown Council is partnering with Transport NSW under Round 3 of the Places to Love program. Campbelltown City Council chose to increase access, both physical and conceptual, to the newly established Billabong Parkland Precinct by revitalising the Moore Oxley Underpass.

This project aspired to connect to Country by challenging the Artist's to draw their conceptual and sensory inspiration from Campbelltown's closest natural billabong, Minerva Pool.

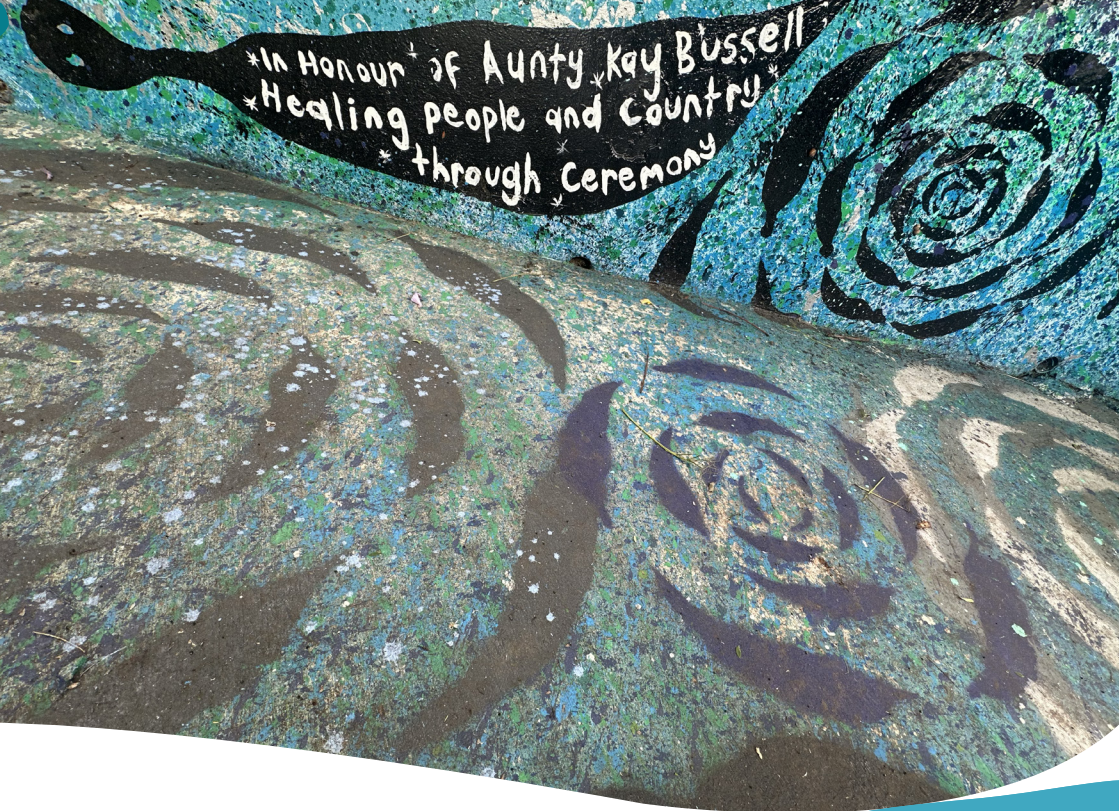
Minerva Pool is a sacred site women's business and birthing site for the Dharawal People. Over the millennia hundreds of thousands of babies were born at Minerva Pool. Only women and children are permitted to enter its waters.

The site features: a small waterfall, pristine waterhole, sandstone ledges and a small stone island. The waterhole has a singularly round, womb-like shape and reflects an open sky. Echoed around the edge are miniature pools. The running waterfall creates an endless stream of rippling water across the basin and light across the birthing cave walls.

Minerva Pools is located in the Dharawal National Park, New South Wales. The walking track to the site is a 2.4km grade 3 hike.

[-34.168251, 150.815642](#)





CONNECTION TO CEREMONY & COMMUNITY

WATER CLEANSING CEREMONY

Water Cleansing is a Traditional Aboriginal ceremony aimed at cleansing newborn babies, spirits and establishing connection between people and Country.

Aunty Kay Bussell was an important figure within the Dharawal community and a Custodian of the Traditional Water Cleansing Ceremony. Aunty Kay passed this knowledge on to Aunty Karen Beetson who cleansed the Artists and Community involved as a part of the artwork's development. Ngalambay is in honour of Aunty Kay Bussell; healing people and Country through Ceremony.





CONNECTION TO COMMUNITY

Given Minerva Pool is a sacred women's business site, the two Artists selected and the community collaborators are all Aboriginal women with strong connections to Dharawal Country.

The artwork development ran parallel to three community collaboration gatherings, one at the Billabong Underpass prospective site, one on Country at Minerva Pool, and one in the studio at Campbelltown Arts Centre.

These gatherings became significant celebrations of sisterhood, intergenerational connection and cultural sharing and ultimately formed the emotively charged spirit of this artwork.



COMMUNITY COLLABORATORS INCLUDE:

Aunty Karen Austin
 Aunty Karen Beetson
 Aunty Michelle Hailes
 Aunty Annette Houston
 Aunty Doris Williams
 Tina Taylor
 Sarah Morris
 Abbey Davies

PROJECT TEAM

CAMPBELLTOWN ARTS CENTRE

Timothy George

Creative Producer, Public Art

Sarah Morris

Arts and Cultural Liaison Officer – Aboriginal & Torres Strait Islander

Donna Vo

Design & Communications Officer

CAMPBELLTOWN CITY COUNCIL

Michaela Beattie

Environmental Education Officer

Christopher Murphy

Section Leader- Public Domain Management

Melissa Low

Coordinator Placemaking, Events and Activations

Claudia Hunter

Senior Placemaking Activation Project Officer

Rebecca Jones

Communications Officer

CONTRACTORS

Curio Projects

Fabrication

SPECIAL THANKS

The Bussell Family, for granting permission to show video footage of Aunty Kay performing the Water Cleansing Ceremony, which influenced and inspired the direction of the artwork.


Aunty Glenda, for granting permission to include images of Minerva Pool and providing the Welcome to Country at the cultural launch.

Aunty Karen Beetson for providing Water Cleansing Ceremony to the group and at the cultural launch.

Jo Tanginoa, for providing linguistic support on the naming of the artwork.

PLACES TO LOVE

This project is proudly funded by the NSW Government through Transport NSW's Places to Love program. Transport for NSW's Places to Love program collaborates with a number of pilot councils on demonstration projects that trial improving walkable access to, and the quality of, local public space in and around transport hub precincts. The program trials temporary changes that can inform and guide future interventions to public space. The demonstration projects are a way to quickly test how to make public spaces more vibrant and active using trials, pop-ups and semi-permanent changes to test ideas and build the case for longer-term change.

I hope that this artwork
Makes all people & Cultures
feel joy, Peacefulness, Regeneration
& healing. In honour of our
Ancestors  Miliwiling

THIS PROJECT HAS BEEN WAY MORE
THAN A CREATIVE PROCESS, IT
HAS BEEN A SPIRITUAL AND
CULTURAL JOURNEY - UNLIKE ANY
OTHER IVE BEEN INVOLVED IN.

pmate.



Proudly funded by the NSW Government through Transport for NSW's Places to Love program. Commissioned by Campbelltown City Council, 2024. Fabricated by Curio Projects. With special thanks to Aunty Annette Houston, Aunty Doris Williams, Aunty Karen Austin, Aunty Michelle Hailes, Aunty Karen Beetson, Tina Taylor, Aunty Glenda Chalker and Jo Tanginoa for their contributions.

All images provided by the Artists and Campbelltown City Council.